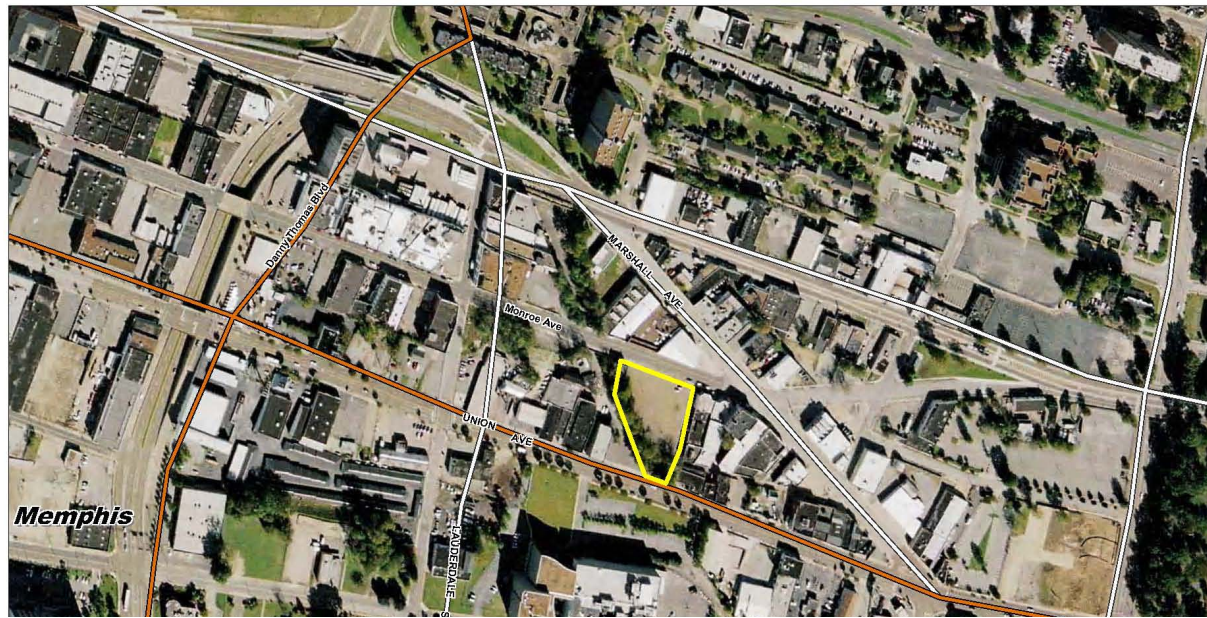


# DOWNTOWN PARCEL

Union Ave (west of Marshall), Memphis, TN 38103 | **Downtown**

**COMMERCIAL**  
Land Available

This site's unique location in the heart of the edge district of downtown Memphis provides an outstanding opportunity for development. It is located near Marshall and Union across from the Commercial Appeal and one block from Beale Street. According to the Center City Commission, there are currently three projects underway or recently completed in this area: Monroe & Lauderdale, \$3.6 million, 27 residential units; Central, \$500K, 2-story

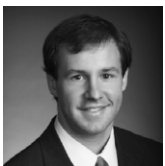


## SITE FEATURES

- Located in The Edge District between Marshall and Lauderdale
- Union Avenue frontage
- 1.15 acres
- Asking Rate \$880,000



## FOR MORE INFORMATION:



**Matt Weathersby**  
901.362.4317  
matt@commadv.com



**Larry Jensen**  
901.273.2344  
ljensen@commadv.com



**CUSHMAN & WAKEFIELD**



**COMMERCIAL ADVISORS**  
INDEPENDENTLY OWNED AND OPERATED

Commercial Advisors Asset Services, LLC 5101 Wheelis Drive, Suite 320, Memphis, TN 38117 | 901-683-0808

No warranty or representation, express or implied, is made as to the accuracy of the information contained herein, and same is submitted subject to errors, omissions, change of price, rental or other conditions, withdrawal without notice, and to any specific listing conditions imposed by our principals.

[www.commadv.com](http://www.commadv.com)