

Germantown Parkway



RETAIL

Land Available



Germantown Pkwy & Shallow Glen
Cordova, TN 38106
Submarket: Northeast



Details

4.8 acres of construction ready land for sale just south of Dexter Road on the largest undeveloped property on Germantown Parkway. The location is in the heart of the booming Germantown Parkway retail corridor and offers 560 feet of frontage on Germantown Parkway. This location is the perfect site for a bank, restaurant, or any retail use.

Project

The entire parcel of 4.8 acres can be purchased, or the site can be divided into three (3) lots ranging from approx. 1.42 to 1.96 acres. The parcels will be graded and ready for construction. The site is zoned C-P (Planned Commercial) and is serviced by all utilities.

Asking Price

\$15-20 per usable SF, depending on desired lot

Traffic Counts

Germantown Parkway and Dexter Rd 44,140 cars/day

Demographics

	1 Mile	3 Mile	5 Mile
2008 Estimated Population	9,926	63,289	141,998
2008 Average Household Income	\$76,171	\$79,121	\$85,079
2008 Median Age	33.8	33.3	35.4

Contact us

For More Information:

Kemp Conrad

901.273.2359

kconrad@commadv.com

Matt Weathersby

901.362.4312

matt@comallmgt.com

www.commadv.com



Commercial Advisors, LLC 3175 Lenox Park Blvd., Suite 100, Memphis, TN 38115 901-366-6070

No warranty or representation, express or implied, is made as to the accuracy of the information contained herein, and same is submitted subject to errors, omissions, change of price, rental or other conditions, withdrawal without notice, and to any specific listing conditions imposed by our principals.

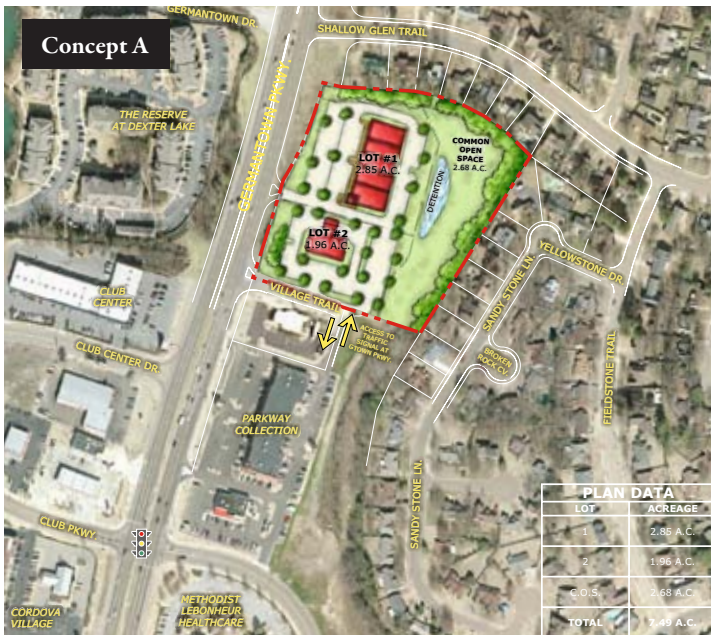
Germantown Parkway



RETAIL Land Available



Sample Site Layouts



Commercial Advisors, LLC 3175 Lenox Park Blvd., Suite 100, Memphis, TN 38115 901-366-6070

No warranty or representation, express or implied, is made as to the accuracy of the information contained herein, and same is submitted subject to errors, omissions, change of price, rental or other conditions, withdrawal without notice, and to any specific listing conditions imposed by our principals.