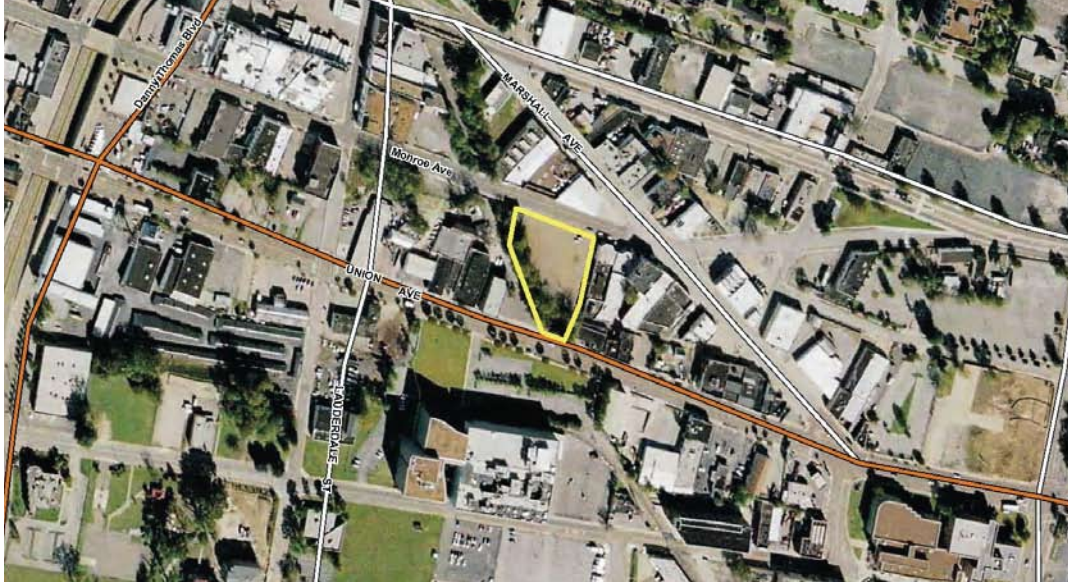


Downtown Parcels For Sale

COMMERCIAL
LAND AVAILABLE



"Outstanding downtown development opportunity."

Union Avenue (west of Marshall)
Memphis, TN 38103
County: Shelby



DETAILS

This site's unique location in the heart of the edge district of downtown Memphis provides an outstanding opportunity for development. It is located near Marshall and Union across from the Commercial Appeal and one block from Beale Street. According to the Center City Commission, there are currently three projects underway or recently completed in this area: Monroe & Lauderdale, \$3.6 million, 27 residential units; Quetzal, \$500K, 2-story coffee-roasting facility, restaurant; and Madison 19, \$2.3 million, 19 condos.

PROJECT

- Located in The Edge District between Marshall and Lauderdale
- Union Avenue frontage
- 1.15 acres

ASKING PRICE

\$880,000

FOR MORE INFORMATION

Contact

Matt Weathersby

901.362.4317 (Direct)

mweathersby@commadv.com

Larry Jensen

901.362.4304 (Direct)

ljensen@commadv.com

Commercial Advisors, LLC

3175 Lenox Park Blvd., Suite 100

Memphis, TN 38115

901.683.0808 (Office)

No warranty or representation, express or implied, is made as to the accuracy of the information contained herein, and same is submitted subject to errors, omissions, change of price, rental or other conditions, withdrawal without notice, and to any specific listing conditions imposed by our principals.

